

BOARD COMMUNICATION: YOLO TRANSPORTATION DISTRICT

350 Industrial Way, Woodland, CA 95776---- (530) 661-0816

Topic: Yolo 80 Managed Lanes Project Update	Agenda Item#:	3e	
	Agenda Type:	Attachments:	<div><div>Yes</div>No</div>
Prepared By: B. Abbanat		Meeting Date: March 13, 2023	

RECOMMENDATION:

Informational. This staff report reflects the monthly written update on significant Yolo 80 Managed Lanes Project activities.

BACKGROUND:

Project Snapshot:

Cost/ Funding

Amount

Total Project Cost	\$207M + Mitigation
Committed Funding	\$94M (\$86M INFRA, \$8M SACOG)
SB 1 Cycle 3 (TCEP) Request	\$103M (uncommitted)
SACOG 22/23 Transformative Program	\$13M (uncommitted)
YoloTD Non-Construction (TAP)	\$2M
Caltrans Non-Construction	\$1M
Caltrans Construction	\$10M

Phase

Date

Environmental (Caltrans, PA&ED) / Tolling Adv. Plng (YoloTD)	Winter – Summer 2023
Design Complete (PS&E)	Summer Spring 2025
Construction Start (CON)	Summer 2025
Construction End (CON)	Fall 2027

Grant Activities

No grant activities occurred this month.

Consultant Activities

WSP has completed a draft tolling policy matrix to quickly get input and start orienting YoloTD and regional stakeholders to key policy considerations necessary for advancing a tolling managed lanes project including operations, pricing scheme, occupancy policy, min/max tolls, toll exemptions, and use of excess revenue.

Staff Activities

Tolling Advance Planning:

Ad Hoc Committee Meeting. A Tolling Advance Planning Committee (TAPC) meeting was held on March 6. Key discussion items including YoloTD priorities for VMT mitigation, Tolling Advance Planning Process timeline, an overview of Tolling Policies Factors identified in WSP's tolling policy matrix, and overview of governance structure factors.

Discussion focused on the importance of reducing project VMT impacts first in Yolo county before looking to regional VMT-reducing opportunities. The subcommittee and staff also discussed the importance of community engagement for this project.

Regional Coordination:

SACOG Transportation Committee. YoloTD gave a presentation to the SACOG Transportation Committee on the Yolo 80 Managed Lanes project, including the purpose of tolling, how it improves traffic flow, as well as climate and equity considerations.

Interregional Coordination. Staff met with peer staff from SACOG, Placer County Transportation Planning Agency, El Dorado County Transportation Commission, Sacramento County Transportation Authority to initiate discussion of regional coordination on tolling, including toll policy and governance considerations. Schedules are being coordinated for a follow-up meeting later this month with peer staff at the above agencies, plus Caltrans District 3. The purpose of this ongoing coordination is to solicit input from other regional agencies on important tolling factors including policies from the WSP policy matrix, design, operations contracting, transit, and secondary policy factors.

Legislator Briefings. Yolo TD gave a project briefing to state assemblyperson Cecilia Aguiar-Curry. Briefings with State Senator Bill Dodd and Congressman Mike Thompson will occur the third week in March.

Community Outreach & Engagement:

Davis Chamber of Commerce. YoloTD gave a presentation to the Chamber of Commerce, who expressed strong interest in this project.

Community Outreach and Engagement. In preparation for Caltrans' project EIR release, staff are developing a community outreach and engagement strategy to bring the broader community up to speed and provide input.

March 17th Tour of Priority Projects. Staff are organizing a tour of Yolo County priority transportation capital projects for senior California transportation officials for March 17th from 9 am to 1:30 pm. High-level Caltrans, CTC, SACOG, and Yolo county representatives are invited. We have received almost 20 confirmations with more expected over the next week.

Environmental Review Process (led by Caltrans)

We are awaiting the administrative (internal) draft of the environmental document in April. The public release of the draft environmental document is anticipated in June.

Attachments:

1. Yolo 80 Managed Lanes Update Slides



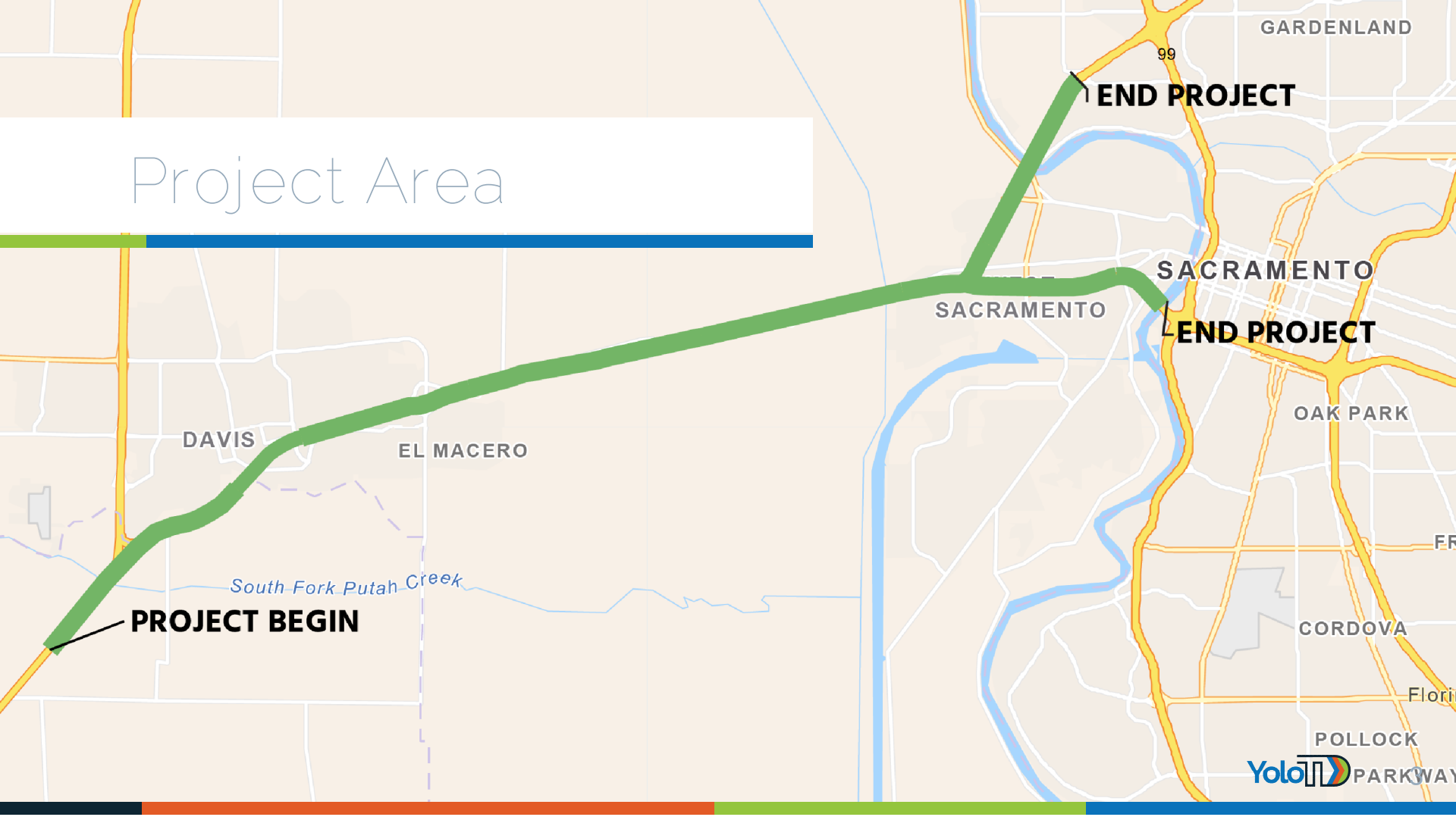
YOLO 80 MANAGED LANES UPDATE

YoloTD Board of Directors
March 13, 2023

Project Need

- ▷ Bottleneck for cars, transit, and freight
- ▷ Only east-west crossing of the Yolo Bypass
- ▷ One of 12 priority projects for the Northern California megaregion
- ▷ Improve transit reliability and bicycle safety

Project Area



PROJECT BEGIN

South Fork Putah Creek

DAVIS

EL MACERO

SACRAMENTO

END PROJECT

SACRAMENTO

END PROJECT

OAK PARK

CORDOVA

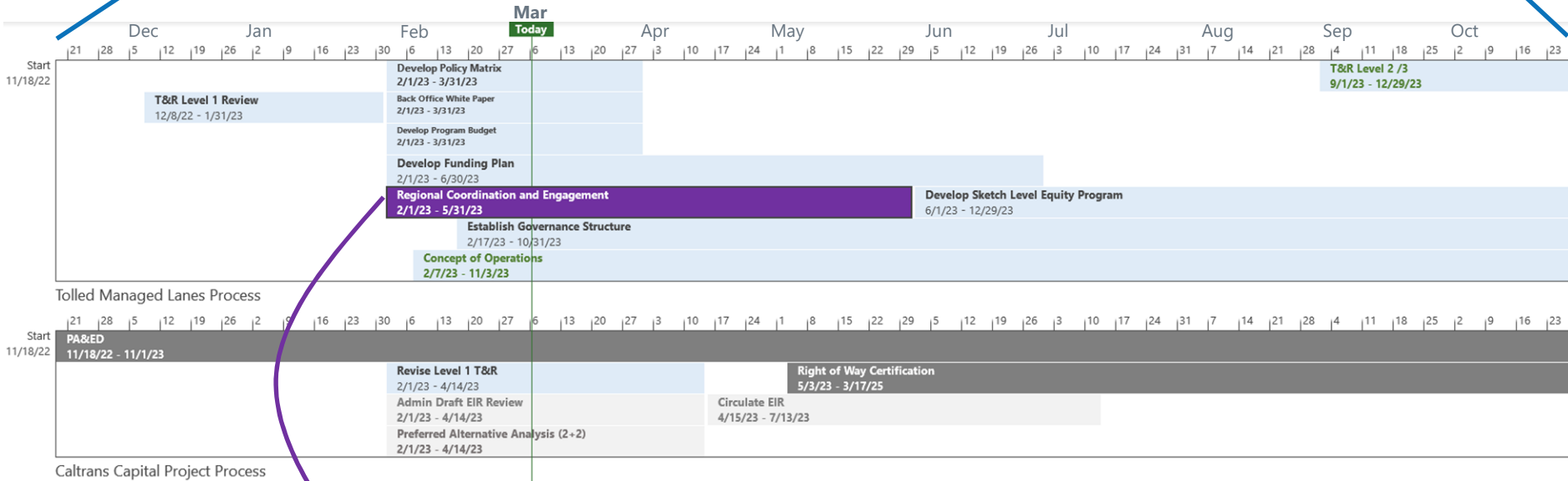
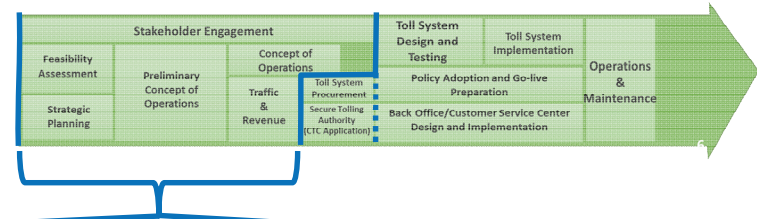
POLLOCK

Yolo COUNTY PARKWAY

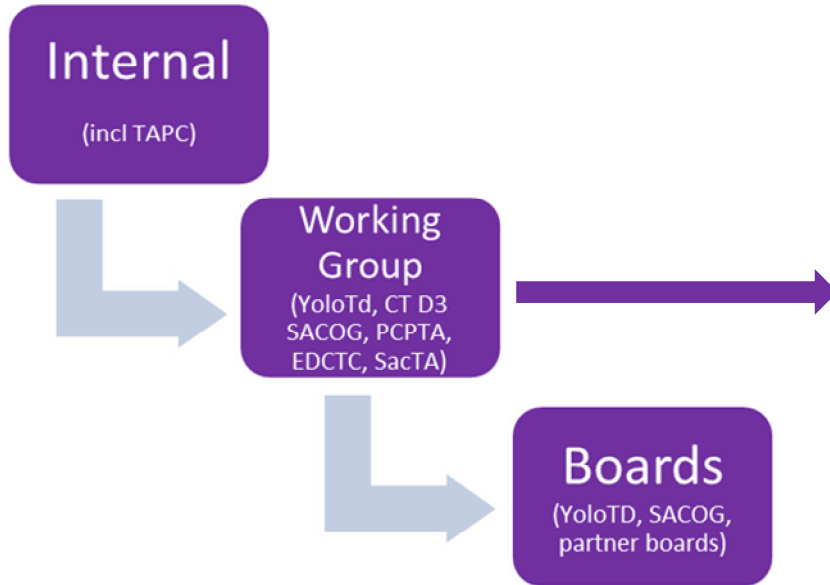
Project Quick Facts

- ▷ Partnership between Caltrans and YoloTD
- ▷ Add one new traffic lane, each way, from Sacramento County line to Solano County line
- ▷ No widening of existing causeway structure
- ▷ Key question – what kind of lane?

Tolling Advance Planning Timeline



Overview of Tolling Policies Factors



Regional Working Group (monthly):

- ▷ Meeting 1: Kick-off
- ▷ **Meeting 2: Policy (primary factors)**
 - Operation
 - Pricing Scheme
 - Occupancy Policy
 - Min/Max Tolls
 - Toll Exemptions
 - Use of Excess Revenues
- ▷ Meeting 3: Design
- ▷ Meeting 4: Contracting
- ▷ Meeting 5: Transit
- ▷ Meeting 6: Policy (secondary factors)

Overview of Governance Structure Factors

Parallel process to Tolling Policies:

Treasure Island Mobility Management Authority (TIMMA)

- The Transportation Authority also serves as the Treasure Island Mobility Management Agency, which coordinates [the transportation needs of Treasure Island](#).
- Scope includes: Bus, Ferry, Walking, Biking, Shuttle, Transit Passes, Parking and Tolling

Bay Area Infrastructure Finance Authority (BAIFA)

- BAIFA is a joint powers authority between MTC and the Bay Area Toll Authority, and shares the same membership as MTC and BATA.
- Scope: Manages [MTC Express Lanes](#). Also works with Caltrans, CHP and county transportation agencies on the Bay Area Express Lanes network.

Overview of Governance Structure Factors

Parallel process to Tolling Policies:

SMCEL JPA

- Hwy-101 Express Lanes management and operation is governed by the San Mateo County Express Lanes Joint Powers Authority (SMCEL JPA), a six member joint powers authority consisting of three San Mateo County Transportation Authority (SMCTA) Board members and three City/County Association of Governments of San Mateo County (C/CAG) Board members.
- Scope: SM 101 Express Lanes Policy and Governance